

## Sigma Delta Technologies Inc.

#B1033-1, Songdo Munhwa-ro 119  
Incheon, Korea 21985  
(+82)32 - 815- 5305

# Katoa Production Support

The ultimate end-to-end solution for your IoT product

## - Introducing Production Support

SDT Standard HW ensures an easy prototyping experience for developers using SDT hardware. To enhance that benefit and expand the prototyping experience to an actual market solution, SDT hereby introduces the Katoa Production Support service.



Product Support customers will be eligible for a complete end-to-end support regarding the actual production of prototypes to suffice market level of cost, durability and security in manufactured devices.

SDT is backed up by a strong network of designing and manufacturing partners with decades of industry experience to present our customers with flexible production options.

The benefits of using our IoT optimized boards and modules, such as instant cloud connection and unique ID certification, are on-going. What we are suggesting is simply a fast, easy, and secure way to actualize your idea.

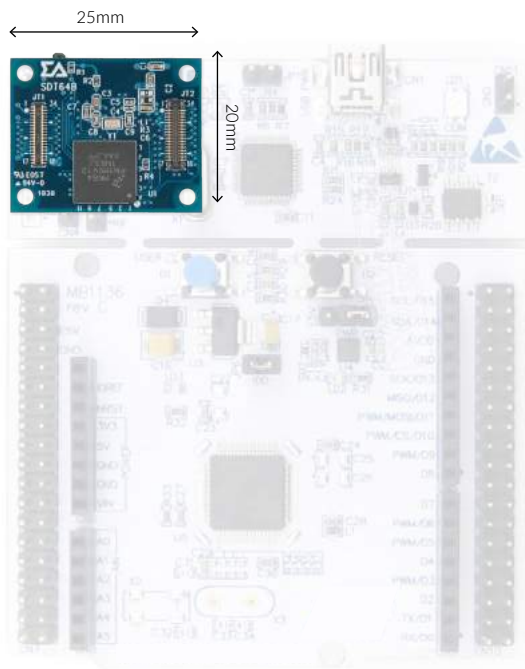
### Production Support Service Can Help

- 1) New business aiming to launch IoT products or services
- 2) Existing business and enterprise interested in adopting IoT to former products/services
- 3) IoT service and solution business looking for reliable production partner

Customers using the Production Support service will be designated with a support team to discuss device specification, size of deployment, security level, and other relevant information. Depending on the collected information, customers will be notified of the cost and timeline of the requested project.

## - Why Katoa?

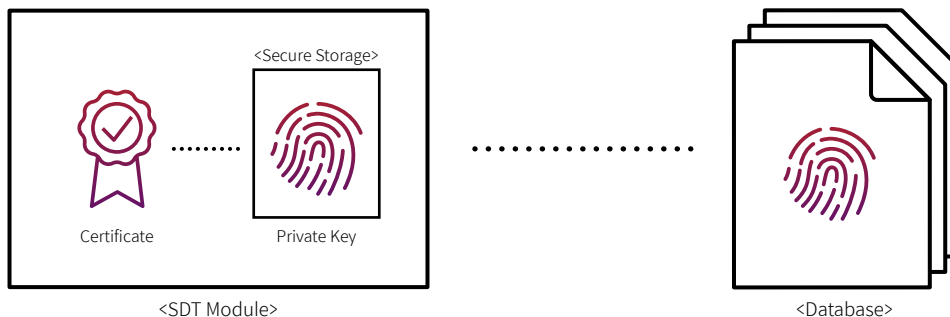
### Fast Production



<70% smaller than other products in the market on average >

IoT is an ecosystem of physical things, which is why SDT is committed to producing small, light-weight hardware that is optimized for easy development and deployment. Using SDT Standard HW allows businesses to choose from a variety of ultracompact boards to attach to any forms of new and existing products for quick prototyping. Once prototyping is done, enterprises may instantly move onto mass production with SDT modules. The near-identical formfactor of modules and boards ensures a significant reduction in production time. Devices manufactured with SDT Standard HW will connect seamlessly to the Katoa network for stable and secure device management.

### Secure Deployment



Devices manufactured through Katoa Production Support will contain unique ID certificates. This entails that the unique identification of each and every device, only possible with upscale mobile phones up until now, will be available in your IoT device for easy tracking and maximum security. Each device is provisioned with a certificate, and this process ensures that each device is globally unique. Certificates are embedded in devices, servers, gateways, and firmwares, and, hence, guarantee security in every step of data transaction.

### Low-cost Maintenance

Deployed devices have to be regularly maintained through cloud for updates. Katoa is a low-cost solution to update your device. Without the need to build your own cloud server or purchase other secure server at a heavy cost, Katoa manages device life-cycle with a subscription system based on the number of deployed devices. It is ideal for businesses against discharging high initial cost.

## - Making an Inquiry

Please send a Production Request email to [sales@sigma-delta.tech](mailto:sales@sigma-delta.tech) including information about the following:

- Company name / address / website
- Company size (no. of employees)
- Contact information of requester
- Application interest (healthcare/smarthome/industrial/etc)
- Project name / description
- Size of deployment (no. of devices)
- Other materials to help us understand your business

### Time To Review

It will take approximately 1 - 2 weeks for us to review your inquiry and suggest a development timeline. We may ask you to submit additional information to better estimate the time and cost of production.